



**resideo**

**V-Plex<sup>®</sup>**  
**The wiring solution**  
**that saves time**  
**and money**  
Addressable Technology





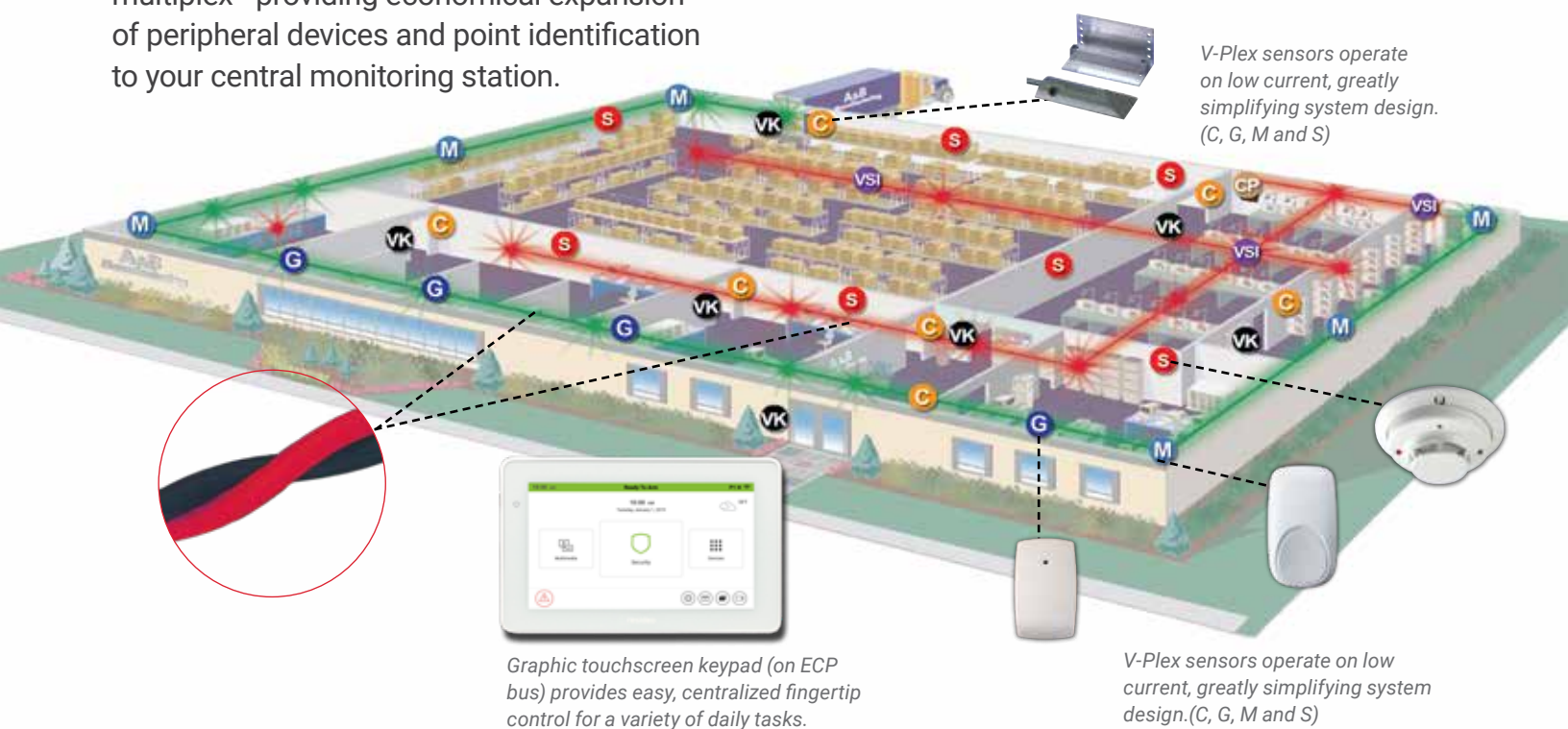
# The V-Plex® Advantage

## The Industry's Leading Addressable Technology

V-Plex is the polling loop technology that literally defines price and performance on a simple pair of wires.

By using two wires instead of four, V-Plex offers significant advantages over “home run” wiring or the conventional four-wire multiplex—providing economical expansion of peripheral devices and point identification to your central monitoring station.

- G** Glassbreak Detector
- M** Motion Detector
- CP** Control Panel
- VK** VISTAKEY®
- VSI** VSI V-Plex Short Loop Isolator
- C** Contact
- S** Smoke Detector



## Benefits

### Reduced Costs

Since each V-Plex sensor can be installed using two wires for power and data—including existing wiring in many cases—costs are substantially reduced.

### Reduced Power Consumption

V-Plex devices draw minimal amounts of current, minimizing the need for auxiliary power supplies.

### Fast, Accurate Identification and Response

Point ID allows you to quickly and easily pinpoint the source of alarm or trouble from the keypad and communicate the information to the proper authorities—and lets you bypass protection at any specific point.

### Reduced Time and Labor

V-Plex offers a labor and time-saving maintenance feature that gives you the ability to diagnose and pinpoint defects. As a result, installation and service professionals can arrive at the

site already knowing the exact location of the problem. Service calls become much more efficient, saving you the time and labor costs associated with repeat visits.

### Reduced Maintenance Costs

V-Plex devices continually monitor functions displayed at the keypad. All issues are stored in the local event log and reported to a monitoring station. This drastically reduces system maintenance costs when annual tests or inspections are performed.

V-Plex products do not require batteries. This eliminates truck rolls for replacements.

The Resideo V-Plex addressable technology offers many new and exciting innovations while fully supporting existing addressable loop products. Efficiencies in installation and reliability add up quickly to improve your bottom line. Begin experiencing the V-Plex advantage today!



## ACCESSORIES



- DT8050A-SN**  
**V-Plex® Dual Tec® Motion Sensor with Anti-Mask**
- Dual motion sensor (PIR/microwave)
  - 50' (15m) mirror optic
  - Anti-mask feature notifies user if sensor is masked



- IS3050A-SN**  
**V-Plex Passive Infrared Motion Sensor with Anti-Mask**
- PIR motion sensor
  - 50' (15m) mirror optic
  - Anti-mask feature notifies user if sensor is masked



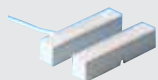
- 5193SD/5193SDT**  
**V-Plex Photoelectric Smoke Detector**
- 5193SDT features (135°F/57°C) heat detector
  - Easy installation and no tools necessary for cleaning



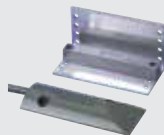
- FG1625SN**  
**V-Plex FlexGuard® Glassbreak Detector**
- FlexCore™ Signal Processor
  - Selectable sensitivity
  - Easy installation with FG-701 Tester
  - No minimum range
  - 25' (9.6m) max range



- 4191SN-WH**  
**V-Plex Recessed Contact**
- 1/2" (12.7mm) diameter case
  - Standard gap: 7/8" (22mm)
  - Steel door adapter available (4191WA)



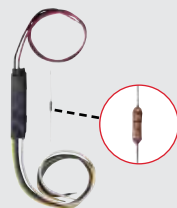
- 4939SN**  
**V-Plex Addressable Surface Mount Contact**
- Snap on cover to conceal mounting screws
  - Standard gap: 1.25" (32mm)
  - 5' (1.5m) CL II jacketed cable
  - Available in white, brown and gray



- 4959SN**  
**V-Plex Addressable Overhead Door Contact**
- Rugged aluminum housing and adjustable L bracket type magnet
  - Standard gap: 2" (51mm)



- 269SN**  
**V-Plex Holdup Switch**
- Fully supervised
  - Reset key for testing and reset of alarm
  - Stainless steel protective cover



- 4193SN/4193SNP**  
**V-Plex Two-Zone Expander**
- Makes any hardwired device V-Plex ready
  - Built-in serial number for addressing
  - One supervised, one unsupervised zone



- 4190SN**  
**V-Plex Two-Zone Expander Module**
- Left Zone-EOLR supervised, open or closed circuit sensors
  - Right Zone-unsupervised, closed circuit sensors



- 4101SN**  
**V-Plex Single Output Relay Module**
- Form C contacts rated at 2A, 28V AC or DC with supervision
  - One Class B EOLR supervised auxiliary input zone



- 4208SNF**  
**V-Plex Universal Class A & Class B Expander Module**
- Provides up to six Class B supervised zones and converts two panel zones to Class A supervised zones
  - Powered from addressable loop or DC power supply
  - Addressing via DIP switch



- 4208SN**  
**V-Plex Eight-Zone Expander Module**
- Dip-switch and serial number polling
  - Supports up to 8 Class B zones



- 4209U**  
**V-Plex Group Zoning Module**
- 4-Zone, 2-Wire Smoke Detector Interface
  - Streamlines large or expanded system installation



## **VISTAKEY** **V-Plex® Single Door Access Control Module**



Now, you can add access control to VISTA® light commercial security systems. VistaKey maximizes security investments by integrating access control, intrusion and fire detection into a single system. You can offer your customers 1 to 15 doors of seamless integration, and a unique combination of security and access control features:

- Arms and disarms security system with access card
- Connects conveniently to the V-Plex polling loop
- Tracks employee door entry and locks/unlocks doors on schedule
- Restricts access based on job function, time or location
- Records events to the VISTA event log; printer optional

## **VPLEX-VSI** **V-Plex Short Isolator**



- Detects and isolates polling loop branches with complete or resistive shorts, and overload or defective polling loop devices on initial power up
- Can be used to isolate burglary devices from fire devices, increasing life safety and protection
- LED indicator reduces troubleshooting time and maintenance costs
- Powered directly from the V-Plex two-wire polling loop
- Can be placed on any major or minor branch in any configuration on the polling loop

## **4297** **V-Plex Polling Loop Driver and Isolator**



- Adds additional polling loop current drive power for large installations
- Provides UL driven requirement to isolate burglary products from fire products
- Power via the control panel auxiliary 12V output

### **For more information**

[resideo.com/pro](http://resideo.com/pro)



**For more information**  
[resideo.com](http://resideo.com)

**Resideo Technologies, Inc.**  
2 Corporate Center Drive,  
Suite 100  
P.O. Box 9040  
Melville, NY 11747  
1-800-645-7492

L/VPLEXBR/D | AF | 05/22  
© 2022 Resideo Technologies, Inc.  
All rights reserved.  
The Honeywell Home trademark  
is used under license from  
Honeywell International Inc.  
These products are manufactured  
by Resideo Technologies,  
Inc. and its affiliates.